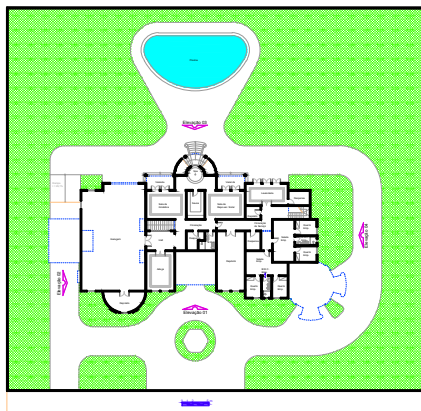
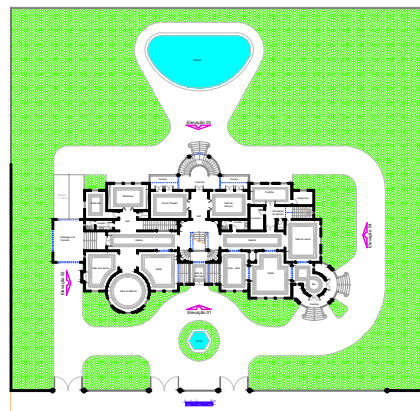


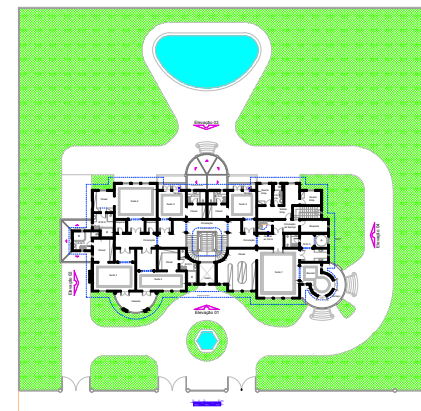
Implantação e Cobertura



Subsolo  
A = 518,24 m<sup>2</sup>

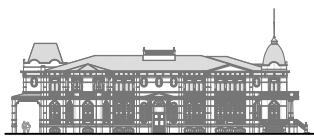


Térreo  
A = 586,79 m<sup>2</sup>

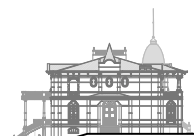


Superior  
A = 521,43 m<sup>2</sup>

Área Total = 1637,46 m<sup>2</sup>



Elevação 01



Elevação 02



Elevação 03



Elevação 04